

CCCM SITE MONITORING: Ohn Taw Gyi (North) Camp


Township: Sittwe (Rakhine, MYANMAR)


April-2017


Geographic Data: Vil. Tract / Town: Khaung Doke Kar

Village/Ward: Baw Du Hpa

Demographic data

 13,655
people

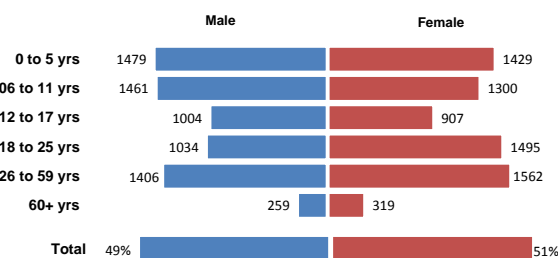
 2,640
households

 56%
children

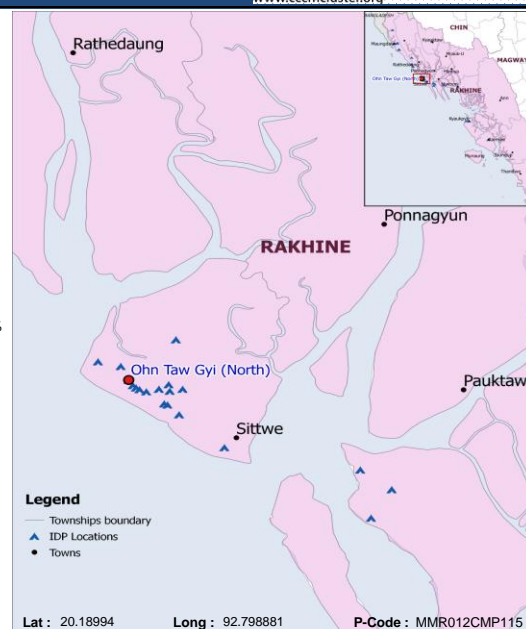
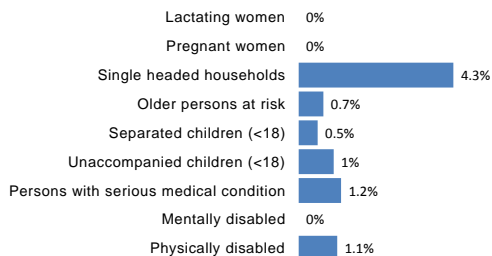
 4%
elderly

 No info
new borns

 No info
deaths

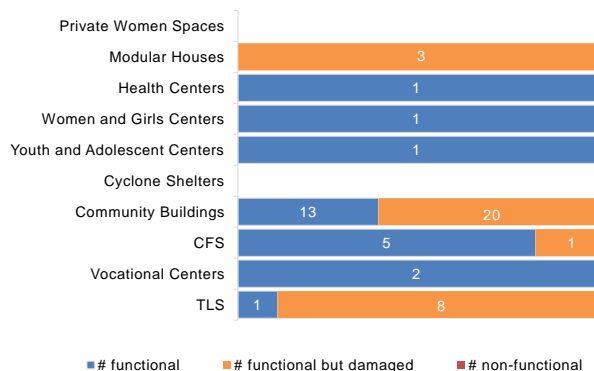


Vulnerabilities data

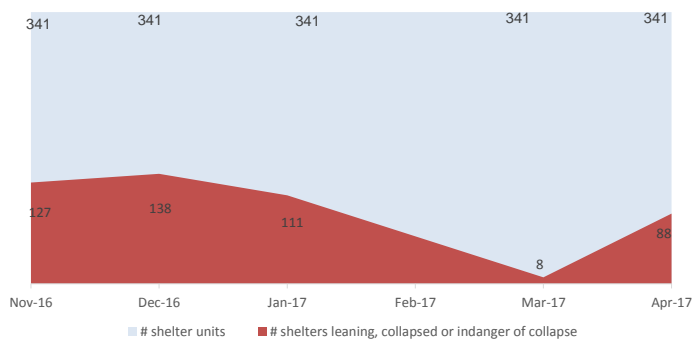


Camp Management or Focal Point Agency: DRC

Community infrastructure damage



Shelter rehabilitation and repair



Sector Overview



CCCM	# of coordinations meetings with CMCs	1
	# of meetings with service providers	1
Community Based Group		# of meetings held
	Men's Sports Club	2
	Embroidery Club	2
	Camp Women's Association	2
	Camp Management Committee (CMC)	1



Health	Health facility presence	Yes
	# of NGO clinics	2
	# of Government clinics	0
	IDPs access to nearby health facility	0

NFI

NFI	# of HHs receiving WaSH consumables (soap, towel)	0
	# of HHs receiving Sanitary Kits / Dignity Kits	0



Shelter	# of temporary shelters (8 – 10 units)	341
	# of informal / makeshift shelters	27
Date of the last Shelter Cluster assessment		No Info

Functional Non-functional

WASH	# Lightings at Latrines	25	10
	#Lighting at other areas of camps	14	10
	# of Hand Pumps	190	46 (19%)
	# of Ponds	No Info	No Info
	# of Latrines	675	119 (15%)
# of Solid Waste Management System		No Info	No Info



Service Delivery Actors in the Camp

